

0-17:23

Movie

90'



Catastrophe



Finesse Ratio	10.1
Wing Span (m)	34.3
Gross Area (m ²)	24.5
Aspect Ratio	9.4

Tip Chord (%)	1.2
M.A.C (m)	3.1
Dihedral (°)	
Powerplant:	
Model	RTWA RTW/50
Type	782
Static Thrust (kN)	117
Static Thrust (lbf)	26.30
Bypass Ratio	5
EGT Margin (°C)	
Fan tip diameter (m)	
Max Nacelle Width (m)	2.1

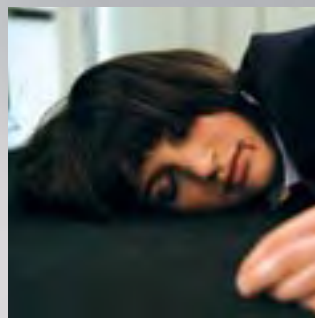


11.500



Crash Point: Berlin

Event Horizon: 0-17:23



Crash Point: Berlin



After a mid-air collision, an uncontrollable passenger plane with 90 passengers on board speeds through the skies over Germany. The impact point for the inevitable plane crash is easily calculated: the center of Berlin.

For the experienced Captain Winkler, the flight from Southern France is just another routine flight, despite the annoying presence of Niclas Sedlazcek, his young and arrogant co-pilot. While the atmosphere in the cockpit is chilly, the passengers of the charter flight happily board the plane.



Among them are the medical student Nina, the quarreling couple Anna and Claus, and the shy, chubby electronic engineer Hub.

In the flight's earliest phase, a minor incident sets the stage for disaster. During take-off, a small cargo plane rams the aircraft. The wing of the exploding plane tears a 3-meter long rip in the fuselage of the passenger jet, creating total panic among the holiday travelers. Yet despite everyone's worst fears, the machine remains in the air. There is only a huge problem: the avionics - the electronics that control the aircraft - have been disabled by the collision.

Neither of the plane's rudders responds as the captain desperately fights for control. Instead, the plane simply gains altitude. The true significance of the catastrophe soon becomes apparent with simple physics anticipating the obvious outcome. The uncontrolled machine will follow a predictable parabolic path, with the calculated point of impact being the heavily populated centre of Berlin...





Crash Point: Berlin



On the ground, a specially coordinated crisis team is forced to make difficult decisions. The total evacuation of Berlin seems impossible.

The only other option appears to be diverting the course of the speeding plane, using military force if necessary. While the terrified passengers and Captain Winkler desperately try to come up with an alternative, 2 military jets suddenly appear in the air as an escort.

The machine reaches an altitude of 11,000 meters in the skies over Germany. It is the highest point in the plane's parabolic path - from this point on, the only direction is down...



Crash Point: Berlin

Catastrophe

Movie, 1 x 90'

Directed by Thomas Jauch

Starring Max von Pufendorf, Peter Haber, Hannes Jaenicke, Julia Hartmann, Bernadette Heerwagen, Michael Grimm

Produced by Hager Moss Film GmbH and funded by FFF Bayern, MEDIA and medienboard Berlin-Brandenburg for ProSieben in association with SevenOne International

All rights reserved © SevenOne International - Credits not contractual - Different territories

www.sevenoneinternational.com - info@sevenoneinternational.com